

**Images of Great Lakes Indians  
by Paul Kane, 1845 to 1848.**

Published courtesy of the  
Royal Ontario Museum, Toronto, Canada.



Plate 1: "Spearing Salmon by Torchlight," by Paul Kane. Menominee on the Fox River that empties into Green Bay, Lake Michigan. Kane's 1845 trip. Oil on canvas. [Royal Ontario Museum, Department of Ethnology, 912.1.10]



Plate 2: "Encampment among the Islands of Lake Huron," by Paul Kane. Southeastern Ojibwa amongst the islands along the east side of Georgian Bay, south of Manitoulin Island. Kane's 1845 trip. Oil on canvas. [Royal Ontario Museum, Department of Ethnology, 912.1.8]



Plate 3: "Ojibbeway Camp on Spider Island," by Paul Kane. Southeastern Ojibwa near the mouth of Manitowaning Bay, Manitoulin Island (the La Cloche Mountains are in the background). Kane's 1845 trip. Oil on board. [Royal Ontario Museum, Department of Ethnology, 912.1.3]



Plate 4: "Indians Assembled at Manitowaning for Treaty Presents," by Paul Kane. Southeastern Ojibwa and Ottawa at Manitowaning, Manitoulin Island. Kane's 1845 trip. Pencil on paper. [Royal Ontario Museum, Department of Ethnology, 946.15.30]



Plate 5: "Sault Ste. Marie," by Paul Kane. Ottawa and Chippewa at Sault Ste. Marie from the American side. Kane's 1846 trip. Oil on canvas. [Royal Ontario Museum, Department of Ethnology, 912.1.9]

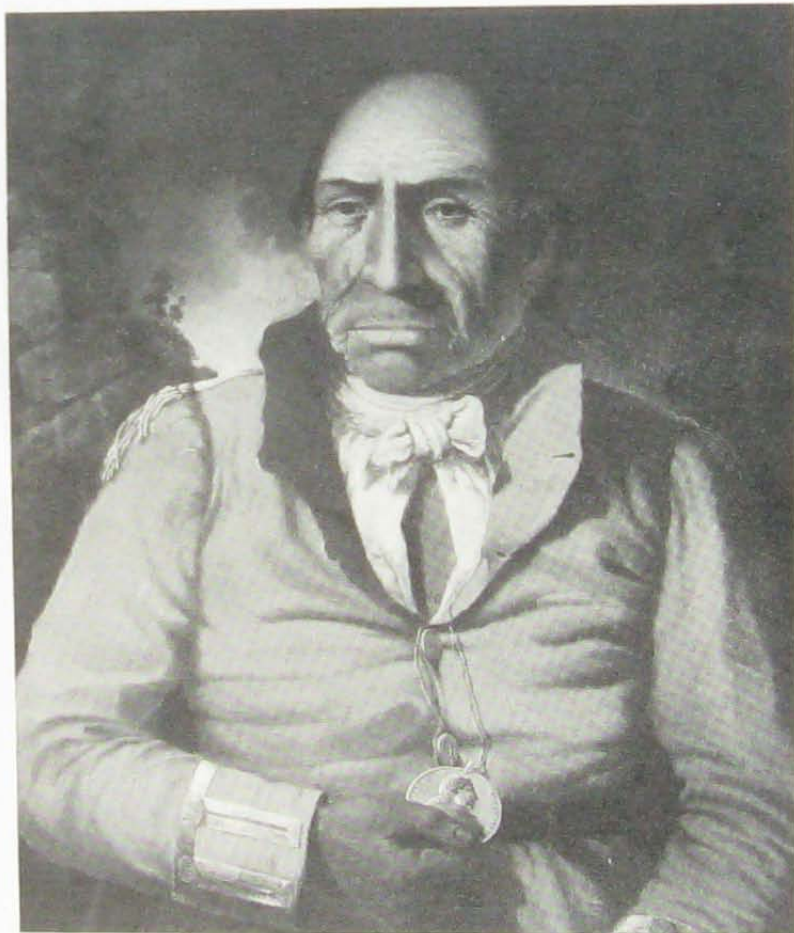


Plate 6: "Maydoc-gan-kinungee," by Paul Kane. A southeastern Ojibwa at Michipicoten, Lake Superior. Kane's 1848 trip. Oil on canvas. [Royal Ontario Museum, Department of Ethnology, 912.1.16]